

MATRIX PACKAGING MACHINERY

PRO SERIES

V E R T I C A L F O R M / F I L L / S E A L

PRO - PROSTAR - PROMAX

FEATURES:

- Programmable, high speed, servo-pneumatic "SmartJaw" sealing system*
 - Machine range: 2" x 3" min. bag to 24" x 36" max bag*
 - Modular, non-proprietary design
 - Stainless steel frame and electrical cabinet
 - Allen Bradley PLC with color touch screen*
 - High speed indexing drive for film advance
 - Solid state temperature controls
 - Photo eye for registered film
 - Front guard door with interlocks
 - Quick change forming tube assemblies; no tools required
 - Automatic web edge film tracking guide
- * Depending on model / configuration

BENEFITS:

- Proven reliability
- Easy to run and maintain
- Quick changeover and setup
- Tremendous value for the dollar
- Extreme flexibility to handle wide range of films

OPTIONS:

- Washdown
- 3A dairy specifications
- Corner seal/Gusset/Flat bottom bag attachment
- Zipper applicators
- Three side seal
- Bag-in-bag configuration available
- Carry handle, hole punch, and more!



MATRIX 
 PACKAGING 
 MACHINERY INC.

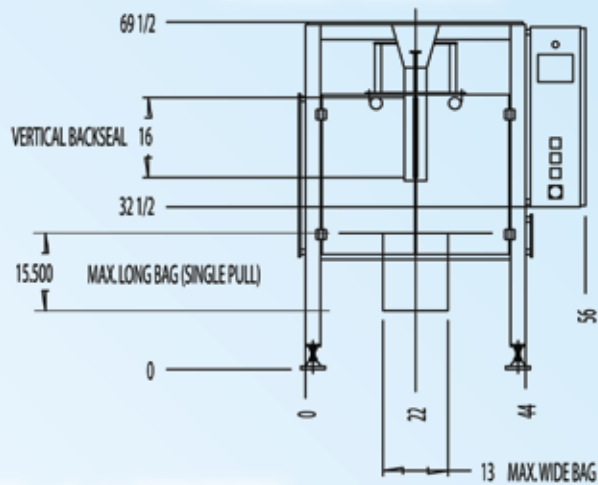


RUNNING WITH MATRIX

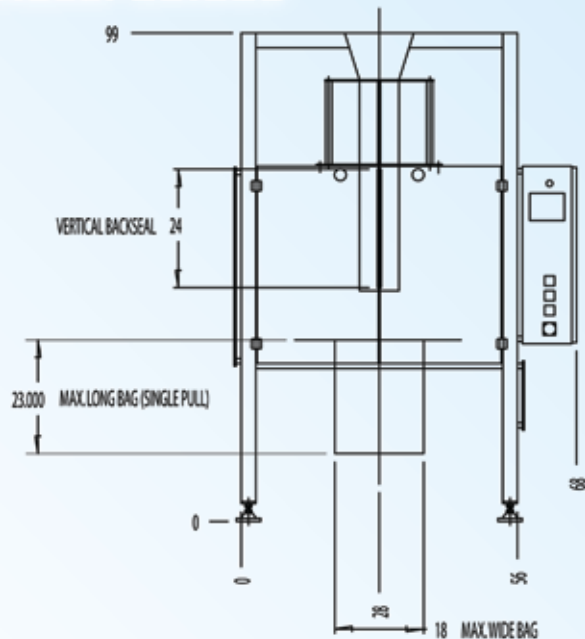
650 Dekora Woods Blvd. Saukville, WI 53080
Phone: (262) 268-8300 www.matrixpm.com

PRO - PROSTAR - PROMAX

Model 201315



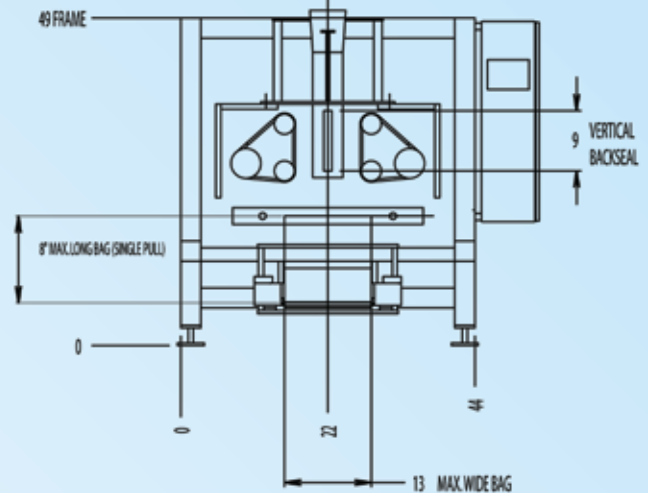
Model 201823



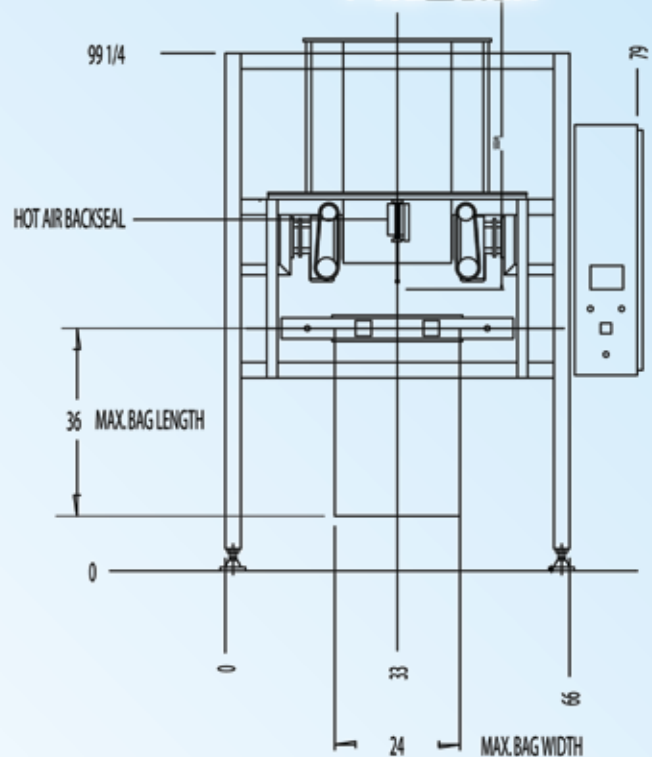
MATRIX
PACKAGING
MACHINERY INC.



PRO-S



PRO-MAX



650 Dekora Woods Blvd. Saukville, WI 53080
 Phone: (262) 268-8300 www.matrixpm.com

RUNNING WITH MATRIX